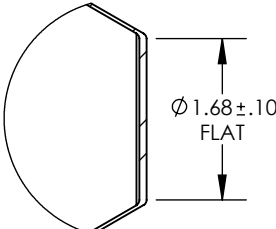
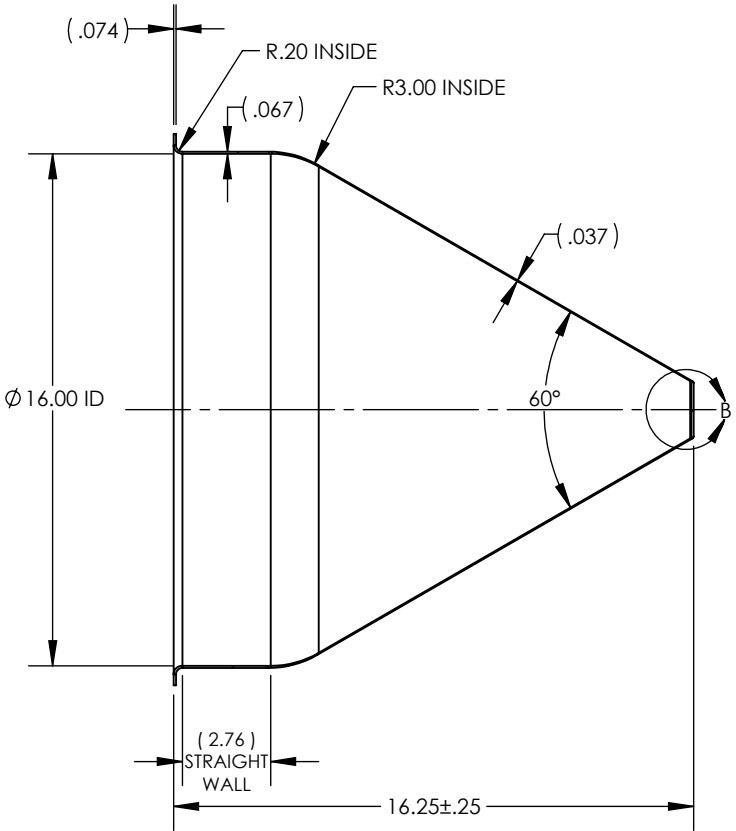
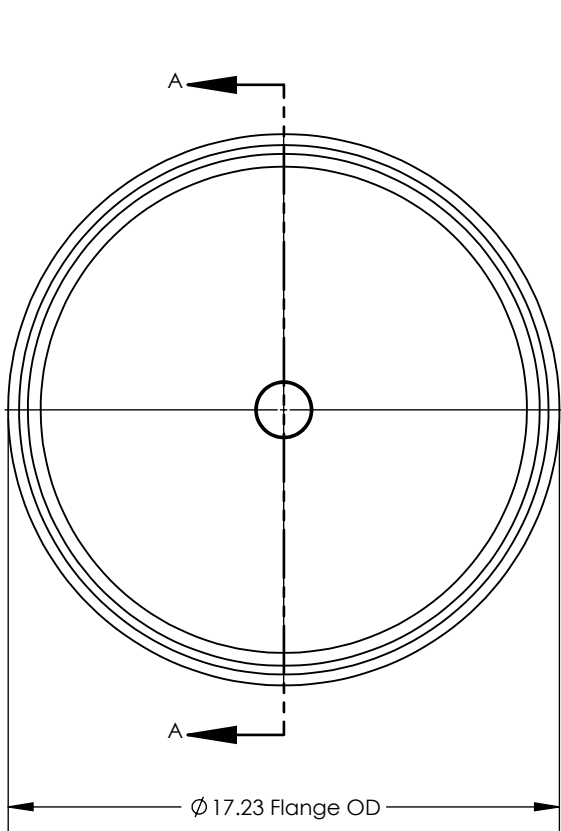


NOTES UNLESS OTHERWISE SPECIFIED

- 1. PARENT MATERIAL: 304 STAINLESS STEEL, 14 GAUGE (0.075" THICK)
- 2. FINISH: NO METAL FINISHING REQUIRED. THE FINAL FINISH SHALL BE THE RESULT OF THE PROCESSES USED TO FABRICATE THE SHAPE, RESULTING IN AN ESTIMATED SURFACE ROUGHNESS OF 80 Ra.
- 3. ESTIMATED INTERNAL VOLUME: 7.35 GALLONS. (1696.9 INCH³)

REVISIONS			
REV.	DESCRIPTION	DATE	APPROVED
00	INITIAL RELEASE FOR MANUFACTURING	14DEC2000	J.KNAPP
01	CHANGED ID FROM 16.08" TO 16.00"	23SEP2005	J.KNAPP
02	CHANGED FLAT FROM 1.86" TO 1.68", CHANGED STRAIGHT WALL FROM 3.85" TO 3.9" REF.	22FEB2012	L.FERNANDEZ
03	CHANGED RADIUS FROM 0.75" TO 3.00", CHANGED STRAIGHT WALL FROM 3.9" REF TO 3.29" REF	27MAR2012	L.FERNANDEZ
A	UPDATED SHEET FORMAT, CORRECTED TITLE BLOCK AND REVISION BLOCK AUTHOR INFORMATION, CORRECTED STRAIGHT WALL DIMENSION CALLOUT, ADDED 0.10" TOLERANCE TO FLAT DIMENSION.	23FEB2016	R.DAVIS
B	UPDATED DRAWING TO CURRENT FORMAT	16JUL2020	K.DRUMHILLER
C	CHANGED FLANGE OD FROM 17.26" TO 17.23" FOR CONSISTANCY WITH OTHER PARTS	3JAN2024	C. FANKHAUSER



DETAIL B
SCALE 1 : 2

SECTION A-A



ISOMETRIC VIEW
SCALE 1 : 12

UNLESS OTHERWISE SPECIFIED: 1. DO NOT SCALE DRAWING 2. DIMENSIONS ARE IN INCHES 3. TOLERANCE: FRACTIONAL ± .25 X.X ±.1 X.XX ±.03 X.XXX ±.010 ANGULAR: ±2 DEG. 4. INTERPRET DRAWING PER ASME-Y14.5M-1994 STANDARDS 5. THIRD ANGLE PROJECTION 6. REMOVE BURRS & BREAK ALL SHARP EDGES WITH R0.03 ±.02		NAME	DATE	TITLE: 16" HOPPER WITH 3" STRAIGHT WALL			
	DRAWN	J.KNAPP	14DEC2000				
		<u>PROPRIETARY AND CONFIDENTIAL</u>			SIZE	DRAWING NUMBER	REV
	THE INFORMATION CONTAINED WITHIN THIS DRAWING IS THE SOLE PROPERTY OF TOLEDO METAL SPINNING COMPANY. ANY REPRODUCTION IN PART OR AS A WHOLE WITHOUT WRITTEN PERMISSION OF TOLEDO METAL SPINNING COMPANY IS PROHIBITED.			A	TMS16314	C	
				SCALE: 1:6	WEIGHT: 8.53	SHEET 1 OF 1	